



SEA CONTAINERS  
LONDON

# The Gallery

22 pax boardroom (no audiovisual)  
20 pax boardroom (with 55" Plasma TV)  
120 pax reception

Acting as an extension of the cultural area merging art with the Southbank, The Gallery features industrial interiors with exposed full daylight allowing for an ideal private meeting space. Located on the ground floor, the space transforms between a communal group check in area with its own reception desk and lounge space to a reception for up to 120 guests within seconds. For more intimate meetings, the mezzanine offers a boardroom for up to 22 guests with a breakout area on the lower level where catering is available showcasing an ideal space for any occasion.



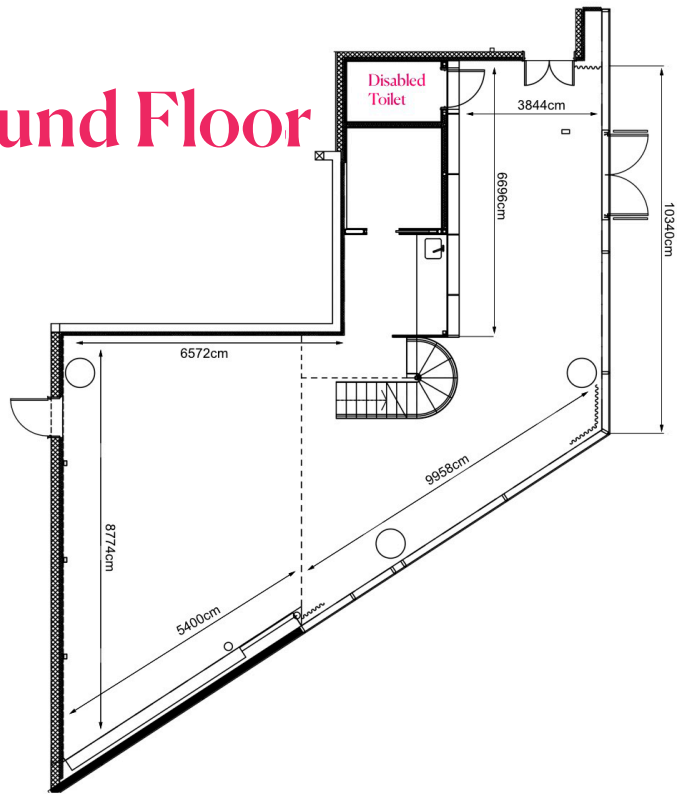






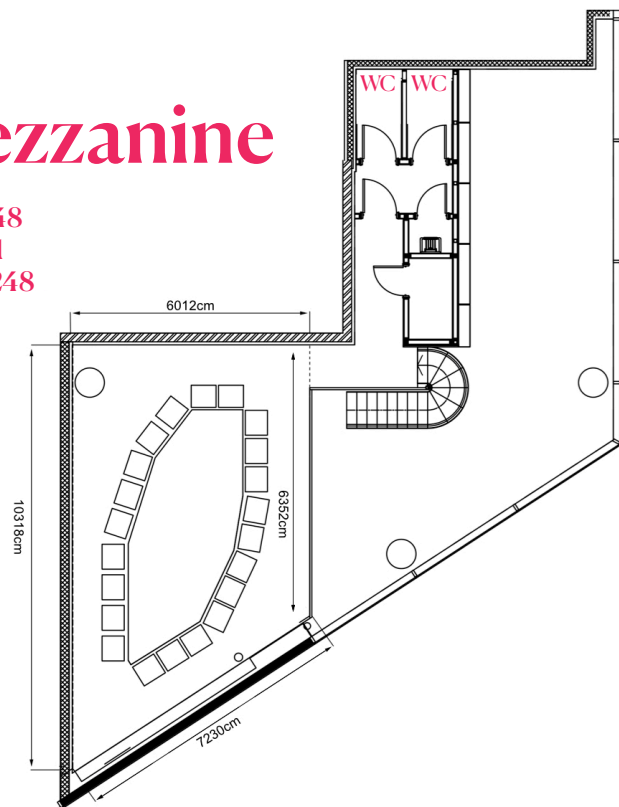
# Ground Floor

Sq.Ft: 1291  
Sq. M: 120  
H. Cm: 236



# Mezzanine

Sq.Ft: 548  
Sq. M: 51  
H. Cm: 248



Full Day £2,000 inc VAT  
Half Day £1,500 inc VAT  
DDR £130 per person inc VAT inc service charge  
(minimum 18 people)  
Additional 55" Plasma TV: £420 inc VAT per day

# The Gallery Menus

# Themed Breaks

---

## 'CHIP & DIP' 15 PER PERSON

crudites, white bean garlic dip  
hummus  
whipped lemon thyme feta  
flatbreads, pita chips  
strawberries and cream  
tea / coffee

## QUICHE BAR 15 PER PERSON

smoked salmon, dill, asparagus  
gruyère, bacon  
goat's cheese, leek  
fruit tartlet  
tea / coffee

## CAMDEN MARKET 20 PER PERSON

onion scones, smoked cheddar, honey roast ham  
mini sea dogs, breaded cod, lettuce, spiced tartare, brioche  
churros, cinnamon sugar  
old-fashioned fudge  
tea / coffee

## CHINA TOWN 20 PER PERSON

assorted dim sums, spring rolls  
wonton chips, edamame hummus, sweet chilli sauce  
cantonese custard buns  
tea / coffee

## NY DELI 20 PER PERSON

pastrami reuben, pickles, mustard fennel  
mini bagels, grilled vegetables  
soft pretzels with condiments  
mini doughnuts  
tea / coffee

THE ABOVE ITEMS ARE SUBJECT TO A MINIMUM OF 10 PEOPLE

All prices are in GBP and are inclusive of VAT at the current prevailing rate.  
Please note that a discretionary service charge of 12.5% will be added to your bill.

# Boxed Lunch

---

## PICNIC BOX 18 PER PERSON

(includes sandwich, cookie, fresh fruit, vegetable crisps)  
pasta salad with olives, semi-dried tomato, basil pesto

choose any one:

turkey club, ciabatta, romesco, gem lettuce  
grilled vegetable, artichoke wrap, hummus, kale  
smoked salmon wrap, rocket, capers, goat's cheese, pickled shallots

## BENTO BOX 25 PER PERSON

assorted sushi  
asian noodle salad with seaweed, sesame dressing  
edamame, rock salt  
pink ginger, soy, wasabi  
chocolate dorayaki (pancake sandwich)

## CURRY BOX 20 PER PERSON

kachumber salad  
chicken or paneer tikka wrap  
mint chutney  
mango, passion fruit, coconut parfait

## POKÉ BOX 25 PER PERSON

green papaya salad, pomegranate dressing, cashew  
sticky rice  
mixed sprouts / avocado / crackers  
marinated ahi tuna or salmon or spicy beetroot  
hawaiian pineapple cake

THE ABOVE ITEMS ARE SUBJECT TO A MINIMUM OF 10 PEOPLE

All prices are in GBP and are inclusive of VAT at the current prevailing rate.  
Please note that a discretionary service charge of 12.5% will be added to your bill.