



# Content

Thames Suites	3
Where We Are	6
Our Neighbourhood	8
Destinations	10
Riverview Studio Suite	12
One Bedroom Suite	14
One Bedroom Patio Suite	16
One Bedroom Riverview Suite	18
Riverview Balcony Suite	20
Ship Shape Suite	22
Thames Apartment	24
Edwardian Cabin Suite	28
Art Deco Cabin Suite	30
Mid-Century Cabin Suite	32
Dynasty Cabin Suite	34
ESG	36



# Thames Suites

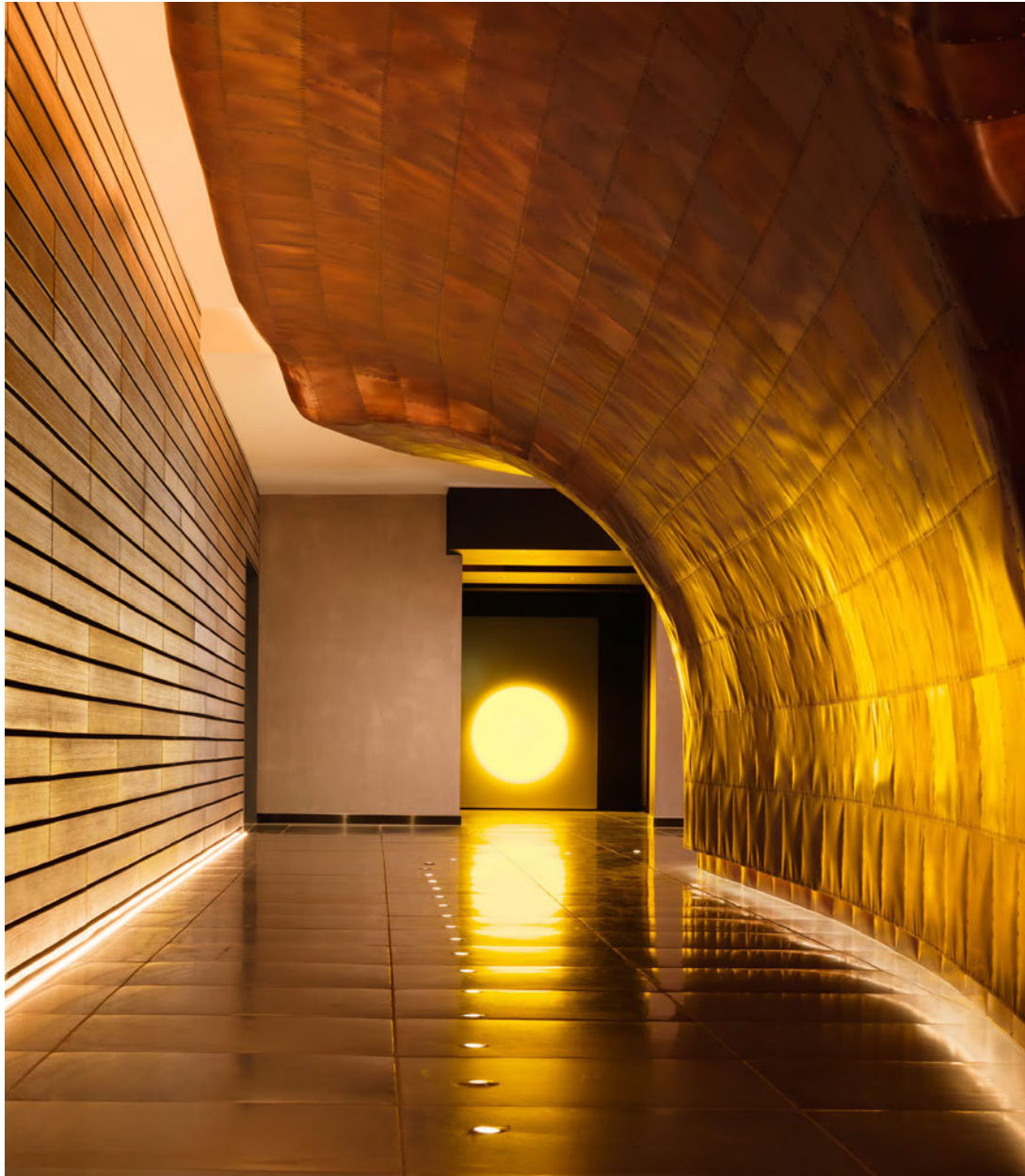
## A NEW EXPERIENCE BY THE RIVER

A new chapter has begun at Sea Containers London. Set along the banks of the River Thames, our newly redesigned Thames Suites - and the introduction of our brand-new Riverview Studio Suites - mark the next evolution of our riverside story.

The Thames Suites at Sea Containers London are designed for elevated riverside living - generous in space and rich in character, shaped by life on the River Thames. Reimagined by Creative Director & Designer Jacu Strauss, our new suites draw inspiration from our maritime heritage and South Bank setting, blending refined comfort with expressive design and inspiring views.

Inside, expect large, inviting beds, clearly defined living and resting zones, bespoke furnishings, softly layered fabrics and lighting, and spacious marble bathrooms - all thoughtfully considered to make your stay feel effortless. Everything you want from a hotel suite - right in the cultural heart of London.







# Where We Are

With a design reminiscent of a 1920s transatlantic cruise liner, award-winning food and drink outlets and an electric energy, **Sea Containers London** is the remarkable South Bank hotel. It's a destination where glamour meets brutalism – and it's your London anchor on the River Thames.

**20 UPPER GROUND, SOUTH BANK,  
LONDON SE1 9PD**



# Our Neighbourhood

Sea Containers London sits proudly on the South Bank in the heart of London's cultural district, home to many of the city's most iconic landmarks. The London Eye. Tate Modern. The National Theatre. Shakespeare's Globe. Southbank Centre. Royal Festival Hall. Borough Market. For art, theatre, film, food and music, you're spoilt for choice – this is the capital at its very best.

As a hotel deeply connected to London's cultural scene, our local cultural partnerships bring guests even closer to the action. From our longstanding relationship with BAFTA as official hotel partner for the BAFTA TV Awards, to our partnership with the British Film Institute (BFI), Sea Containers London is woven into the cultural fabric of the South Bank.





# Destinations



## SEA CONTAINERS RESTAURANT

Sea Containers Restaurant offers a modern yet casual dining experience with a large outdoor terrace overlooking the River Thames. The menu celebrates seasonality and ingredient-led cooking, offering a selection of small and large plates designed to be shared.

## LYANESS BAR

In a vibrant space overlooking the Thames, Lyaness is the flagship bar from the award-winning Mr Lyan and team. The critically acclaimed menu steps away from traditional cocktails and is focused around key ingredients.



## 12TH KNOT ROOFTOP BAR

An eclectic rooftop bar overlooking the River Thames and London's skyline with an open-plan layout which puts the panoramic views centre stage. 12th Knot captures the vibrancy and energy of the South Bank while adding a touch of effortless London glamour.



### AGUA SPA

Curated, quirky and convivial, agua is the definitive urban spa. A multi-sensory sanctuary below the waterline using a curation of niche and home grown brands, including Hedgerow by agua. Results focused therapies created with wellness experts and adapted to individual needs are delivered by skilled practitioners with spirituality, well-being, and the mind-body connection integrated into all treatments and programs.



### GYM

Thoughtfully equipped for all fitness levels, the gym is open to hotel guests 24 hours a day. With a mix of cardio machines, free weights, resistance equipment, and core accessories, the space is designed to support mindful movement and strength in equal measure. Floor-to-ceiling mirrors help you stay connected to form and posture, while the integrated smartphone connectivity on our cardio equipment keeps you focused and in flow.



### CURZON SEA CONTAINERS

Curzon Sea Containers is our intimate 56-seat screening room on the South Bank. Featuring 4k digital projection, Dolby 7.1 surround sound, and stylish seating with plenty of legroom for a comfortable movie experience



### THE DEN

The Den at Sea Containers London is a cozy, low-lit lounge and snug located on the ground floor, on the river, reflecting the hotel's 1920s transatlantic liner aesthetic.

# Riverview Studio Suite

**AT A GLANCE** 32 sqm - 344 sqft | King bed | Junior suite with added space | Uninterrupted river Thames views  
Flexible living and working zone | Custom artworks and nautical-inspired design details | Designed by Jacu Strauss

## 21 SUITES

### FRONT-ROW RIVER VIEWS

A long, refined layout leads to expansive windows framing the Thames, where shifting light and skyline views make the river an ever-present part of your stay.

### CURATED COMFORT

The interiors balance soft nautical curves, richer tones, bespoke artworks and a generous sofa which anchors the living space - offering a calm, comfortable place to work or unwind.

### THOUGHTFUL DETAILS

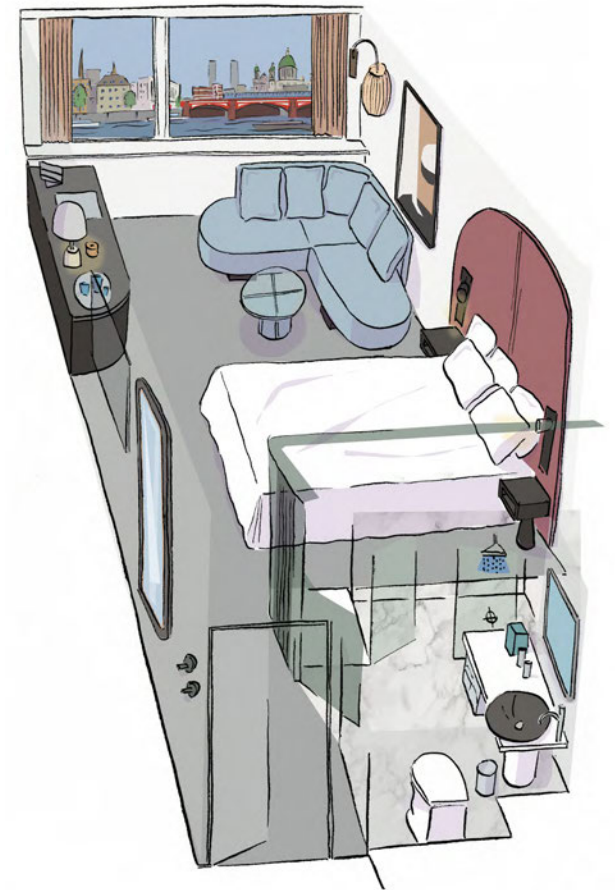
A comfortable upgrade from a Deluxe Room, the Riverview Studio Suite offers a suite-style feel, thoughtful amenities and valuable extra space for modern London stays.

### AMENITIES

Complimentary WiFi | Air conditioning | Flat-screen HDTV | Nespresso coffee machine | Selection of Black and Green Teas | Enhanced minibar | 24-hour in-room dining | Adaptable power sockets with USB charging | Adjustable lighting | Smart storage for short or longer stays | In-room safe | Garment steamer | Curated Phaidon book collection | 24-hour gym access | Complimentary aqua Spa steam room access | Laundry service | Extra bed possible

### BATHROOM

Spacious marble bathroom | Rainfall shower | D.S. & Durga bathroom amenities | Bathrobes & slippers | Grooming amenities | MD London hairdryer | Heated vanity mirror





# One Bedroom Suite

**AT A GLANCE** 59 sqm - 635 sqft | Queen or King bed | Flexible living and working zone | Coffee counter | Breakfast bar with seating | Dressing table | Separate powder room | Designed by Jacu Strauss

## 5 SUITES

### SEPARATE LIVING AREA

A generous, separate living space designed for unwinding, working or entertaining. Bespoke furnishings, a comfortable sofa and flexible dining area create an effortless flow from slow mornings to relaxed evenings.

### THOUGHTFUL COMFORT

A spacious marble bathroom with freestanding bath and rainfall shower is paired with a separate powder room. Dimmable lighting, adaptable sockets and an intuitive layout ensure comfort comes naturally, day or night.

### DESIGN WITH CHARACTER

Layered textures, tailored materials and playful nautical references bring depth and personality to the suite.

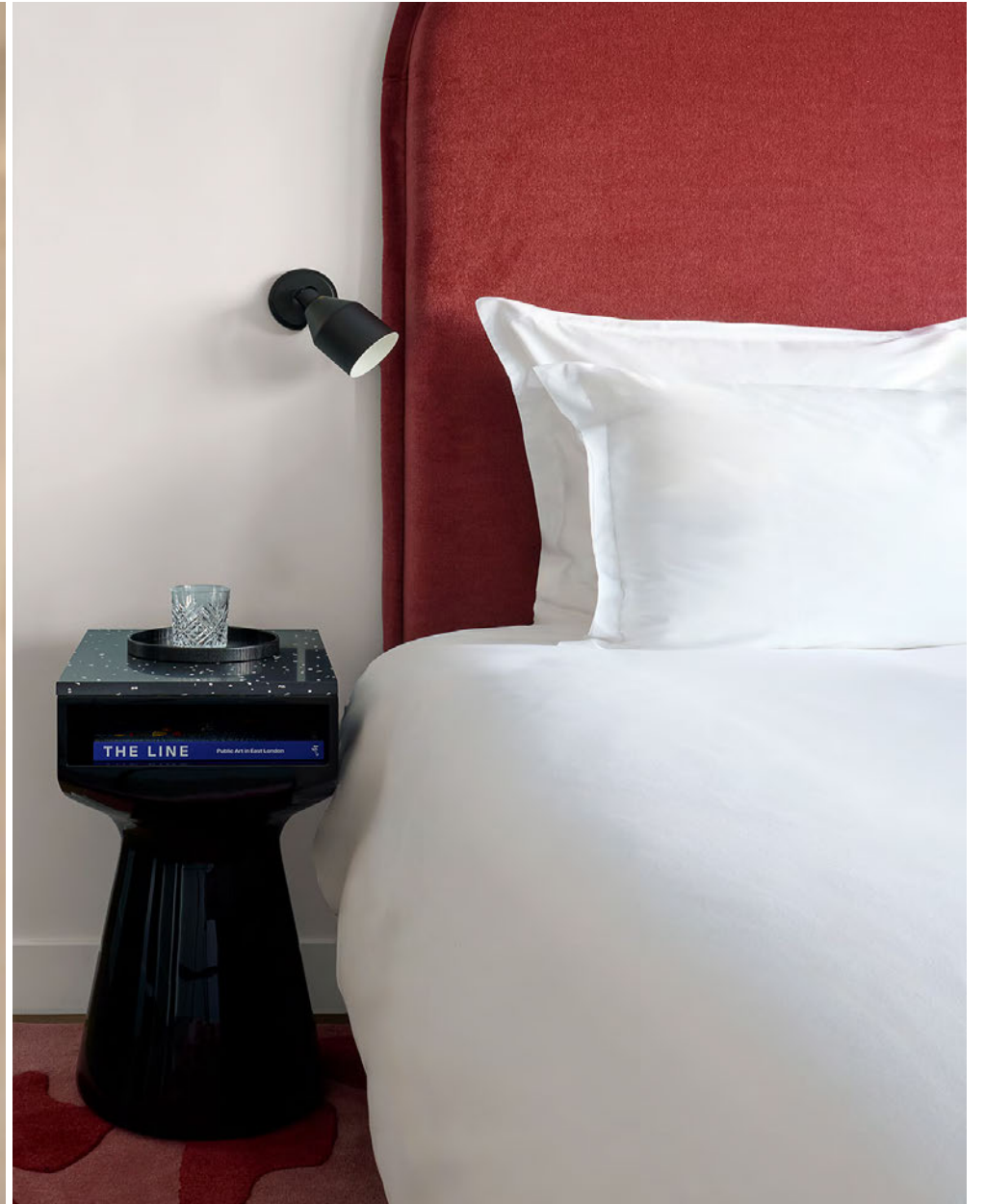
### AMENITIES

Complimentary WiFi | Air conditioning | Flat-screen HDTV | Nespresso coffee machine | Selection of Black and Green Teas | Cocktail Bar | Enhanced minibar | 24-hour in-room dining | Adaptable power sockets with USB charging | Adjustable lighting | Substantial storage for short or longer stays | In-room safe | Garment steamer | Curated Phaidon book collection | 24-hour gym access | Extra bed not possible

### BATHROOM

Spacious marble bathroom | Freestanding bath | Rainfall shower | D.S. & Durga bathroom amenities | Bathrobes & slippers | Grooming amenities | MD London hairdryer | Heated vanity mirror





# One Bedroom Patio Suite

**AT A GLANCE** 59 sqm - 635 sqft | Queen or King bed | Flexible living and working zone | Coffee counter | Breakfast bar with seating | Dressing table | Separate powder room | Furnished outdoor patio | Designed by Jacu Strauss

## 1 SUITE

### **SEPARATE LIVING AREA**

A generous, separate living space designed for unwinding, working or entertaining. Bespoke furnishings, a comfortable sofa and flexible dining area create an effortless flow from slow mornings to relaxed evenings.

### **THOUGHTFUL COMFORT**

A spacious marble bathroom with freestanding bath and rainfall shower is paired with a separate powder room. Dimmable lighting, adaptable sockets and an intuitive layout ensure comfort comes naturally, day or night.

### **OUTDOOR LIVING**

Unwind on your private terrace with a morning coffee, evening drinks, or a spot of alfresco dining - an exclusive city escape that feels a world away from the buzz of the city.

### **AMENITIES**

Complimentary WiFi | Air conditioning | Flat-screen HDTV | Nespresso coffee machine | Selection of Black and Green Teas | Cocktail Bar | Enhanced minibar | 24-hour in-room dining | Adaptable power sockets with USB charging | Adjustable lighting | Smart storage for short or longer stays | In-room safe | Garment steamer | Curated Phaidon book collection | 24-hour gym access | Extra bed not possible

### **BATHROOM**

Spacious marble bathroom | Freestanding bath | Rainfall shower | D.S. & Durga bathroom amenities | Bathrobes & slippers | Grooming amenities | MD London hairdryer | Heated vanity mirror



# One Bedroom Riverview Suite

**AT A GLANCE** 59 sqm - 635 sqft | Uninterrupted river Thames views | King bed | Flexible living and working zone | Coffee counter | Breakfast bar with seating | Dressing table | Separate powder room | New custom artworks and nautical-inspired design details | Designed by Jacu Strauss

## 5 SUITES

### SUITE LIVING

Designed for space and separation, the suite pairs a playful en-suite bedroom with a generous living area, featuring bespoke furnishings, a comfortable sofa, and a breakfast bar or workspace framed by expansive river views.

### CINEMATIC THAMES VIEWS

Sweeping views across the River Thames anchor the experience, with expansive windows framing London's skyline and ever-changing light. Carefully composed layouts ensure the river remains the focal point throughout the suite.

### ELEVATED COMFORT

A spacious marble bathroom includes a freestanding bath and rainfall shower, alongside an additional private restroom. Dimmable lighting, adaptable power sockets, and flexible layouts support a seamless, modern way of staying within easy reach of London's top attractions.

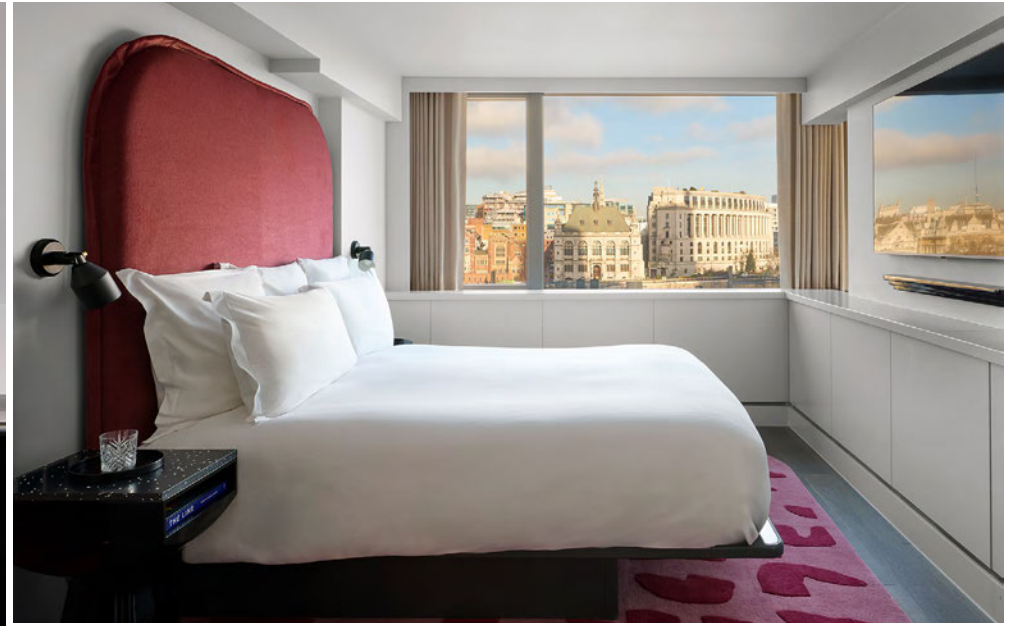
### AMENITIES

Complimentary WiFi | Air conditioning | Flat-screen HDTV | Nespresso coffee machine | Selection of Black and Green Teas | Cocktail Bar | Enhanced minibar | 24-hour in-room dining | Adaptable power sockets with USB charging | Adjustable lighting | Smart storage for short or longer stays | In-room safe | Garment steamer | Curated Phaidon book collection | 24-hour gym access | Complimentary aqua Spa steam room access | Laundry service | Extra bed not possible

### BATHROOM

Spacious marble bathroom | Freestanding bath | Rainfall shower | D.S. & Durga bathroom amenities | Bathrobes & slippers | Grooming amenities | MD London hairdryer | Heated vanity mirror





# Riverview Balcony Suite

**AT A GLANCE** 65 sqm - 700 sqft | Uninterrupted river Thames views | Private sheltered balcony with seating | King bed | Flexible living and working zone | Coffee counter | Breakfast bar with seating | Dressing table | Separate powder room | New design with bespoke furnishings and custom artworks | Designed by Jacu Strauss

## 18 SUITES

### **BALCONY ABOVE THE THAMES**

Step out onto your private balcony and take in uninterrupted views of the river and city. The perfect setting for morning coffee, sunset drinks, or stargazing over London.

### **SPACIOUS LIVING AREA**

An expansive open-plan layout combines generous living and sleeping areas anchored by comfortable, bespoke furnishings. Designed for comfort as much as style, the suite balances the spirit of a contemporary cruise liner with the feeling of luxury.

### **EFFORTLESS EXTRAS**

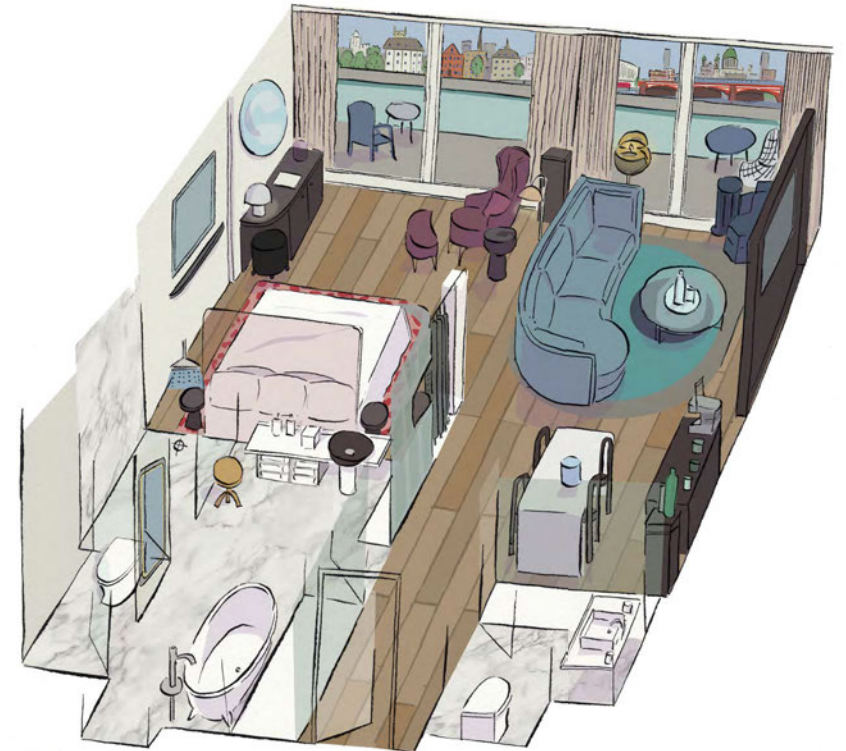
An oversized marble bathroom features a freestanding bath and rainfall shower, while adjustable lighting and upgraded amenities create a luxurious experience, from slow mornings to evening wind-downs.

### **AMENITIES**

Complimentary WiFi | Air conditioning | Flat-screen HDTV | Nespresso coffee machine | Selection of Black and Green Teas | Cocktail Bar | Enhanced minibar | 24-hour in-room dining | Adaptable power sockets with USB charging | Adjustable lighting | Smart storage for short or longer stays | In-room safe | Garment steamer | Curated Phaidon book collection | 24-hour gym access | Complimentary aqua Spa steam room access | Laundry service | Extra bed possible

### **BATHROOM**

Spacious marble bathroom | Freestanding bath | Rainfall shower | D.S. & Durga bathroom amenities | Bathrobes & slippers | Grooming amenities | MD London hairdryer | Heated vanity mirror





# Ship Shape Suite

**AT A GLANCE** 59 sqm - 635 sqft | King bed | Fitness zone with VAHA Mirror, Peloton Bike, NOHrD strength equipment and Peloton core accessories | Recovery space featuring Technogym bands, Theragun Pro and an Eight Sleep Pod | Living area | Designed by Jacu Strauss

## 1 SUITE

### STATE-OF-THE-ART EQUIPMENT

Work out in privacy with a VAHA interactive fitness class mirror, Peloton bike and core training accessories, NOHrD strength training equipment, dumbbells from 5kg-25kg and a weighted bench, and guidance on maximising all in-room features.

### REST & RECOVERY

Whether you're breaking a sweat, or relaxing post-event, the Ship Shape suite has everything you need, including a mini-bar with energy boosting and gut friendly options, an air purifier, and Eight Sleep Pod to enhance deep sleep.

### SPACIOUS BATHROOM

The Carrara marble en-suite bathroom features a rainfall shower and separate freestanding bath, as well as an additional powder room leading from the living space.

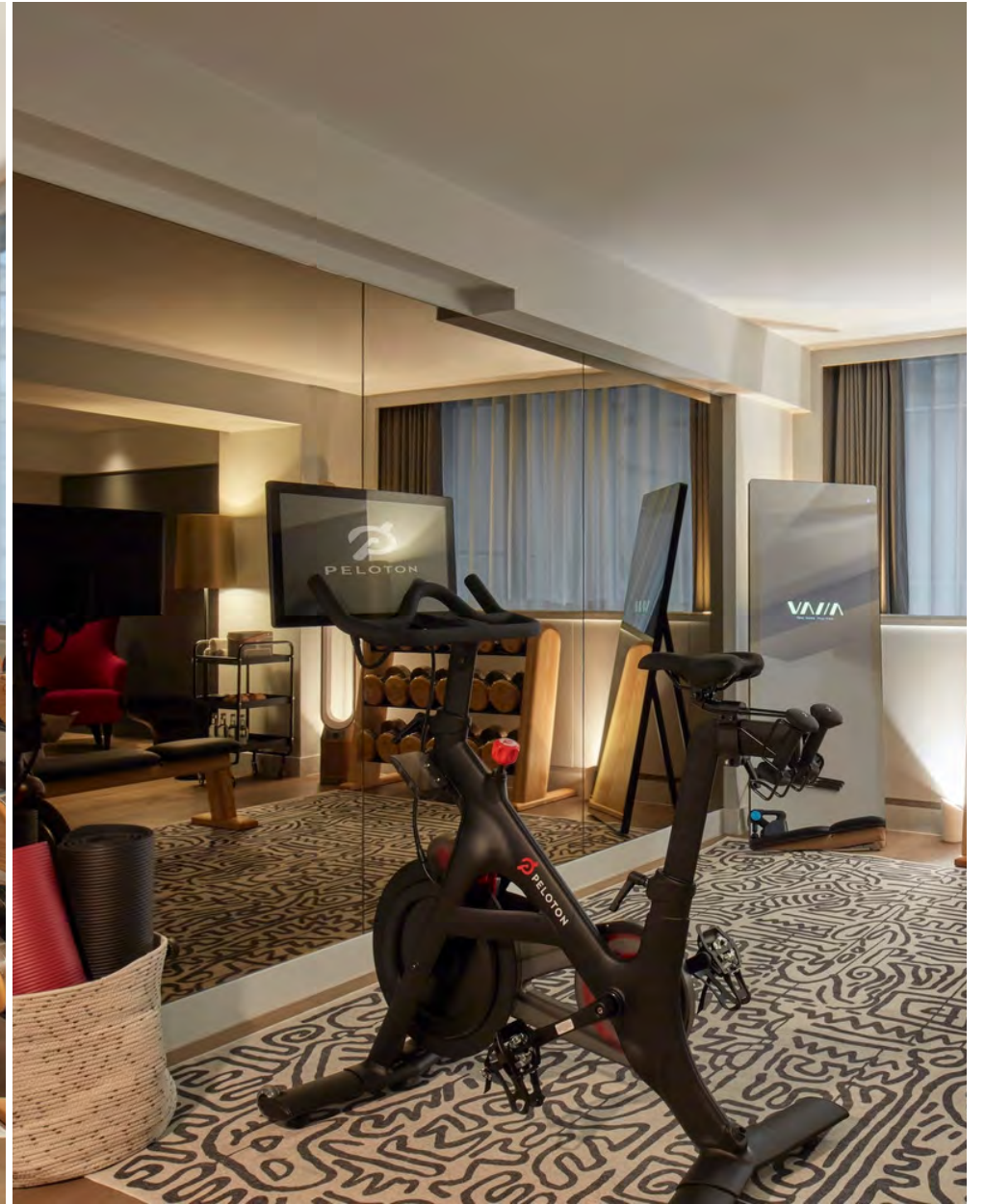
### AMENITIES

Complimentary WiFi | Air conditioning | Flat-screen HDTV | Nespresso coffee machine | Selection of Black and Green Teas | Fully stocked mini-bar, including energy boosting and gut friendly options | Air purifier | Full access to guidance on maximising the in-room features | Inclusive laundry of your workout clothing | Wardrobe | In-room safe | Extra bed not possible

### BATHROOM

Freestanding bath | Rainfall shower | D.S. & Durga bathroom amenities | Bathrobes & slippers | Grooming amenities | Hairdryer | Vanity mirror





# Thames Apartment

**AT A GLANCE** 112 sqm - 1206 sqft | Uninterrupted river Thames views | Queen or King bed | Flexible living and working zone | Kitchenette and breakfast bar | 8-seater dining table and comfortable seating | Dressing table | Separate powder room | Designed by Jacu Strauss

## **2 APARTMENTS**

### **ELEVATED LIVING EXPERIENCE**

From the master suite to the oversized marble bathroom with freestanding bath and rainfall shower, every element is designed for comfort and indulgence. A separate living area and powder room ensure space and privacy, whether you're unwinding together or welcoming guests.

### **DESIGNED TO ENTERTAIN**

With a dining table for up to 8 guests, a fully stocked wet bar, and open-plan living and dining spaces, the Thames Apartment is perfect for hosting. Wall-to-wall windows flood the space with natural light and frame London at its most iconic.

### **UNRIVALLED VIEWS**

Wake up to London at your feet. With multiple riverside perspectives, the Apartments showcase the capital in every direction. Just outside, the cultural heartbeat of the South Bank awaits – galleries, theatres, and world-class dining all moments away.

### **ADDITIONAL BEDROOM**

For added space and flexibility, the Thames Apartment may be connected to an additional Standard Bedroom through a private corridor. This arrangement is accessed via a second front-door entrance, providing enhanced privacy and convenience.

### **AMENITIES**

Complimentary WiFi | Air conditioning | Flat-screen HDTV | Nespresso coffee machine | Selection of Black and Green Teas | Cocktail Bar | Enhanced minibar | Working desk | In-room safe | Iron or steamer | Speaker | 2 Extra beds possible

### **BATHROOM**

Freestanding bath | Rainfall shower | D.S. & Durga bathroom amenities | Bathrobes & slippers | Grooming amenities | MD London hairdryer | Heated vanity mirror | Separate powder room



# Cabin Suites

A Remarkable Experience by the River Thames.

Part of our Thames Suites collection, each of our four Cabin Suites offers a stay unlike any other - an immersive journey into the golden age of transatlantic travel. Inspired by iconic design movements of the 20th century, every suite invites guests to experience a distinct era through evocative interiors, thoughtful craftsmanship, and layers of rich storytelling.

No two suites are alike. From carefully sourced vintage furnishings to playful design details, each space has been curated to spark curiosity, nostalgia, and discovery. Blending timeless character with contemporary comfort and the luxury of a modern suite stay, the Cabin Suites offer a truly transportive and memorable experience.



# Edwardian Cabin Suite

**AT A GLANCE** 55 sqm - 592 sqft | Views of the river Thames | Sitting room with dining area and wet bar | King bed with Naturalmat organic mattress, handmade in Devon | Separate powder room | Completely unique design with original and antique furnishing

## 1 SUITE

### The Golden Age of Voyages

With its elegant sitting room and separate bedroom, The Edwardian Cabin Suite at Sea Containers London whispers stories of grand sea crossings, and the height of early 20th-century luxury. Step back in time - your cabin awaits.

### ELEGANT LIVING AREA

Be transported back in time beautiful, period furniture, a comfortable sofa, dining table and wet bar plus views of the River Thames.

### SUMPTUOUS BEDROOM

Sleep soundly on a sumptuous King bed with handcrafted Naturalmat mattress or pause to reflect at the restored Edwardian desk.

### MARBLE BATHROOM

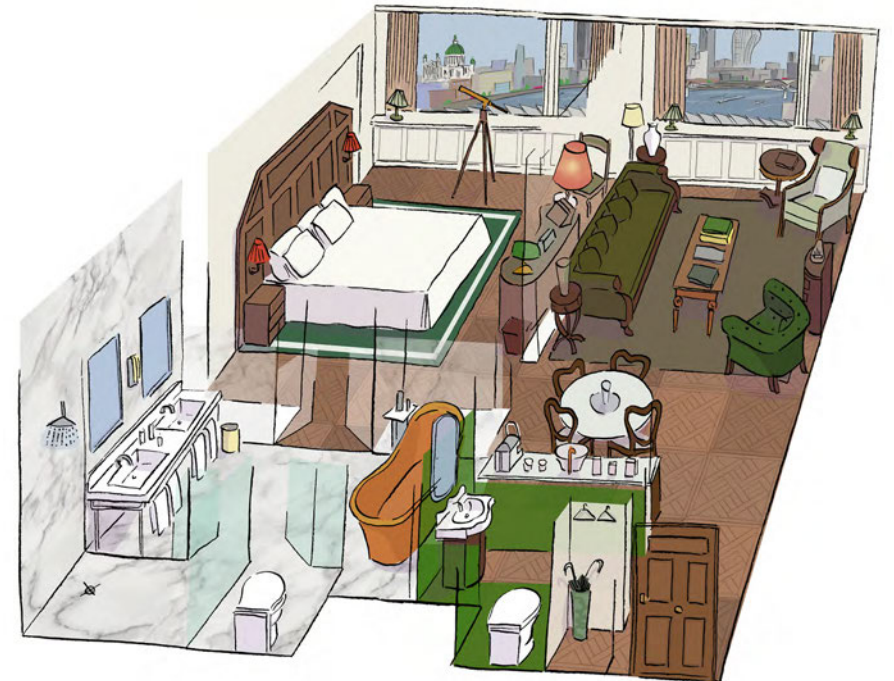
Make the most of the marble bathroom with double vanity sink, separate rainfall shower and freestanding copper bath.

### AMENITIES

Car parking and EV charger\* | Champagne breakfast in-room or breakfast in Sea Containers Restaurant | Samsung 'Frame' televisions in sitting room and bedroom | Curated minibar | Curated Phaidon book collection | Sea Containers Curzon movie tickets (Fri-Sun) | Laundry and dry-cleaning service | 24-hour In Room Dining | 24-hour Fitness | Spa Steam and Shower Facilities Daily | Late 1pm check-out\*

### BATHROOM

Freestanding nickel bathtub | Hedgerow by agua Bath salt | Rainfall shower | D.S. & Durga bathroom amenities | Bathrobes & slippers | MD London hairdryer, hair straightener and curling tool | Separate powder room





# Art Deco Cabin Suite

**AT A GLANCE** 55 sqm - 592 sqft | Views of the river Thames | Sitting room with dining area and wet bar | King bed with Naturalmat organic mattress, handmade in Devon | Separate powder room | Completely unique design with original and antique furnishing

## 1 SUITE

### The Glamour of the Jazz Age

The Art Deco Cabin Suite is a celebration of the roaring 20s and 30s - a time of optimism, cultural dynamism, and exquisite craftsmanship. Sleek ocean liners carried the world's most stylish travellers across the sea, their lounges alive with music, laughter, and the clinking of champagne glasses. Step into a world of opulence and contrast - where underground speakeasies thrived, travel was a grand affair, and design was at its most glamorous.

### THEATRICAL LIVING AREA

Be transported back in time with beautiful, period furniture from Vinterior, a comfortable sofa, dining table and wet bar plus views of the River Thames.

### STATEMENT BEDROOM

Framing the plush King bed with Burl wood deco headboard are a pair of statement Art Deco Swedish walnut bedside tables.

### MARBLE BATHROOM

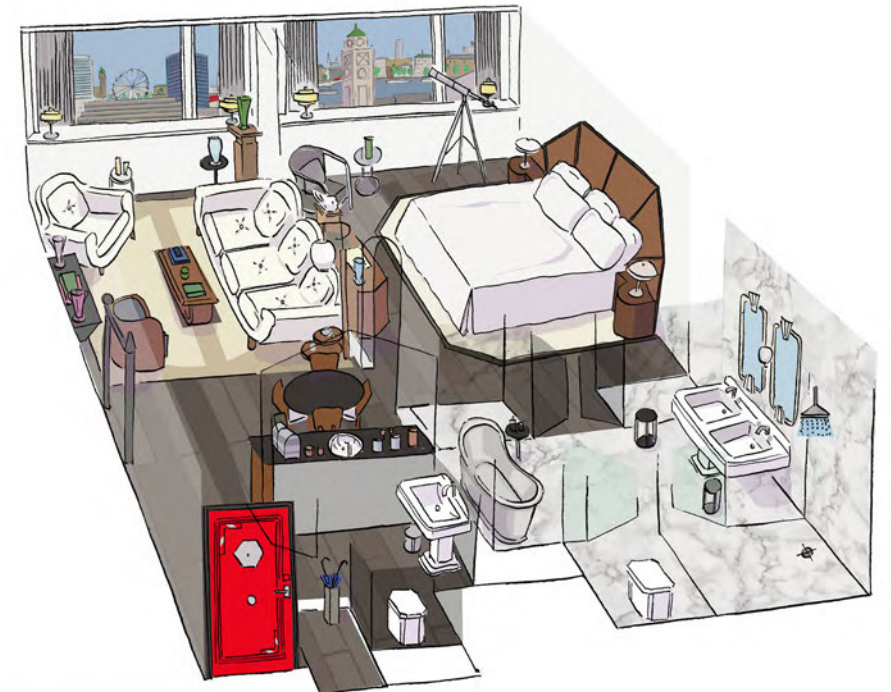
Step into a marble-clad ensuite to soak in the freestanding nickel bath or refresh under the rainfall shower.

### AMENITIES

Car parking and EV charger\* | Champagne breakfast in-room or breakfast in Sea Containers Restaurant | Samsung 'Frame' televisions in sitting room and bedroom | Curated minibar | Curated Phaidon book collection | Sea Containers Curzon movie tickets (Fri-Sun) | Laundry and dry-cleaning service | 24-hour In Room Dining | 24-hour Fitness | Spa Steam and Shower Facilities Daily | Late 1pm check-out\*

### BATHROOM

Freestanding copper bathtub | Hedgerow by agua Bath salt | Rainfall shower | D.S. & Durga bathroom amenities | Bathrobes & slippers | MD London hairdryer, hair straightener and curling tool | Separate powder room



\*Subject to availability



# Mid-Century Cabin Suite

**AT A GLANCE** 55 sqm - 592 sqft | Views of the river Thames | Sitting room with dining area and wet bar | King bed with Naturalmat organic mattress, handmade in Devon | Separate powder room | Completely unique design with original and antique furnishing

## 1 SUITE

### The spirit of a New Era

It's the late 50s, and great transatlantic liners have evolved - sleek, modern, and effortlessly stylish. These floating marvels rival the grandest spaces on land, setting new standards for travel and design. The Mid-Century Cabin Suite embodies this joyful, forward-thinking era, where optimism and innovation shaped everything from interiors to fashion. Designed with simplicity, utility, and bold creativity, this one-of-a-kind suite is a tribute to mid-century modernism at its most inviting.

### STATEMENT LIVING AREA

A Danish powder-blue sofa and chairs set centre stage, capturing the era's love for colour, comfort and clean lines and creating an inviting space to enjoy the views.

### STYLISH BEDROOM

A carefully curated selection of mid-century décor and soft lighting ensure the space feels both sophisticated and inviting - an ode to the era's perfect balance of form and function.

### SLICK BATHROOM

Step into a marble-clad en-suite that marries Mid-Century style with modern luxury. Soak in a freestanding bath or refresh under the rainfall shower.

### AMENITIES

Car parking and EV charger\* | Champagne breakfast in-room or breakfast in Sea Containers Restaurant | Samsung 'Frame' televisions in sitting room and bedroom | Curated minibar | Curated Phaidon book collection | Sea Containers Curzon movie tickets (Fri-Sun) | Laundry and dry-cleaning service | 24-hour In Room Dining | 24-hour Fitness | Spa Steam and Shower Facilities Daily | Late 1pm check-out\*

### BATHROOM

Freestanding statement bathtub | Hedgerow by agua Bath salt | Rainfall shower | D.S. & Durga bathroom amenities | Bathrobes & slippers | MD London hairdryer, hair straightener and curling tool | Separate powder room



\*Subject to availability



# Dynasty Cabin Suite

**AT A GLANCE** 55 sqm - 592 sqft | Views of the river Thames | Sitting room with dining area and wet bar | King bed with Naturalmat organic mattress, handmade in Devon | Separate powder room | Completely unique design with original and antique furnishing

## 1 SUITE

### The Decadence of the 80s

Bold, opulent, and utterly unapologetic - welcome to the 1980s. The Dynasty Cabin Suite is a love letter to excess, glamour, and statement design. Plush textures, glossy finishes, and a high-octane attitude define the space – this is an expressive suite for those who adore the era of power dressing, fashion icons, and unapologetic indulgence, the Dynasty Cabin Suite is pure escapism. Here, the 80s are alive in all their maximalist glory - because sometimes, more is more.

### STATEMENT LIVING AREA

A Danish powder-blue sofa and chairs set centre stage, capturing the era's love for colour, comfort and clean lines and creating an inviting space to enjoy the views.

### STATEMENT LIVING AREA

Sink into the iconic Maralunga leather sofa by Vico Magistretti - a statement of 80s excess, bold design, and unapologetic comfort, which we sourced from Vinterior.

### BOLD BATHROOM

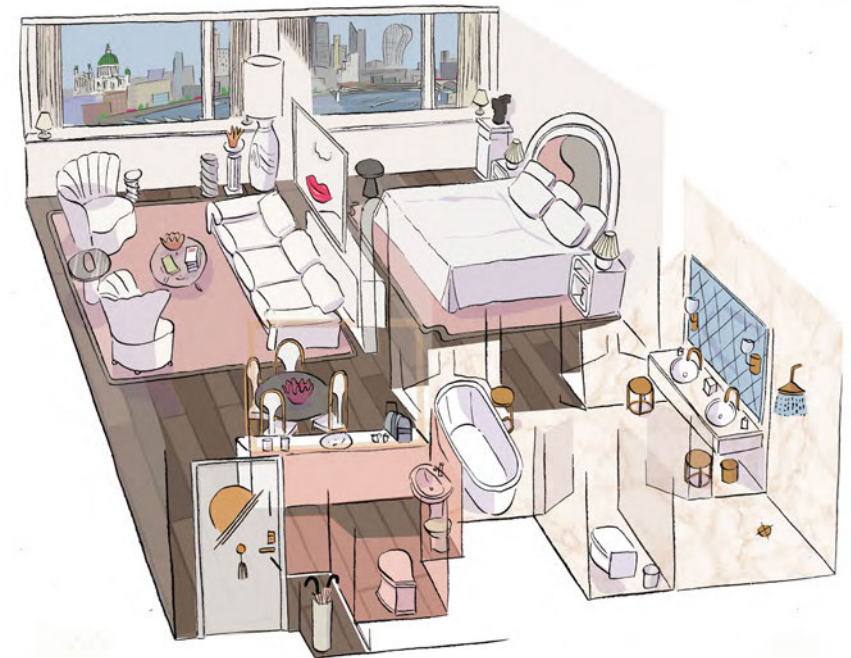
Step into an en-suite fit for an 80s icon - bold, glamorous, and unapologetically extra. A deep freestanding bath, spacious rainfall shower and double vanity set the stage to glam up in style.

### AMENITIES

Car parking and EV charger\* | Champagne breakfast in-room or breakfast in Sea Containers Restaurant | Samsung 'Frame' televisions in sitting room and bedroom | Curated minibar | Curated Phaidon book collection | Sea Containers Curzon movie tickets (Fri-Sun) | Laundry and dry-cleaning service | 24-hour In Room Dining | 24-hour Fitness | Spa Steam and Shower Facilities Daily | Late 1pm check-out\*

### BATHROOM

Freestanding bathtub | Hedgerow by agua Bath salt | Rainfall shower | D.S. & Durga bathroom amenities | Bathrobes & slippers | MD London hairdryer, hair straightener and curling tool | Separate powder room



\*Subject to availability



# ESG Highlights

The stand-out certifications for Sea Containers include: BREEAM, Very Good rating — thanks to the sensitive refit and Energy Performance Certificate (EPC) B-energy rating, which is very high at 28. Powered on renewable electricity through Good Energy and gas for heating with 3% of the electricity produced by solar panels on the property. From 2023 all carbon data has been third-party assured by Carbon Plus enabling a decarbonisation pathway for the property aligned with SBTi principles, following an audit in 2019 with Energy Assist. All utilities are monitored by a central BMS and reported with CarbonXGen. LEDs throughout with digital check-in/out solutions, in-room eco solutions include single-use-free and large-format amenities.

Water conservation and waste reduction are a priority: we have water fountains in our London properties front of house and back of house, and waste separation happens with Bywaters, London's leading recycling and waste management company, throughout.

We work with Fibrelab for nonstable textile recycling. Sea Containers London has official charity partnerships with local East London charities, Breathe Arts Health Research and the Felix Project.

# Made Blue Foundation

Providing clean water where it's needed most, across Asia, Africa, and the Americas. Made Blue Foundation is an entrepreneurial water charity on a mission to ensure everyone has access to clean drinking water. With rising global temperatures, water stress and scarcity have long been recognised as critical risks by the World Economic Forum. Few understand this urgency better than Made Blue, founded in the Netherlands in 2014 to address the challenge head-on.

Through Lore Group's partnership with Made Blue, every room night sold across our hotels funds 100 litres of clean, fresh water. Guests staying at any of our six hotels receive this 'gift' to pay forward - empowering them to choose where and whom their contribution will support. From 2024, Sea Containers has made available a total of 20,473,899 litres so far of clean drinking water enough to guarantee the supply for at least 281 people with safe water for 10 years or more.



[READ OUR GLOBAL ESG REPORT](#)







